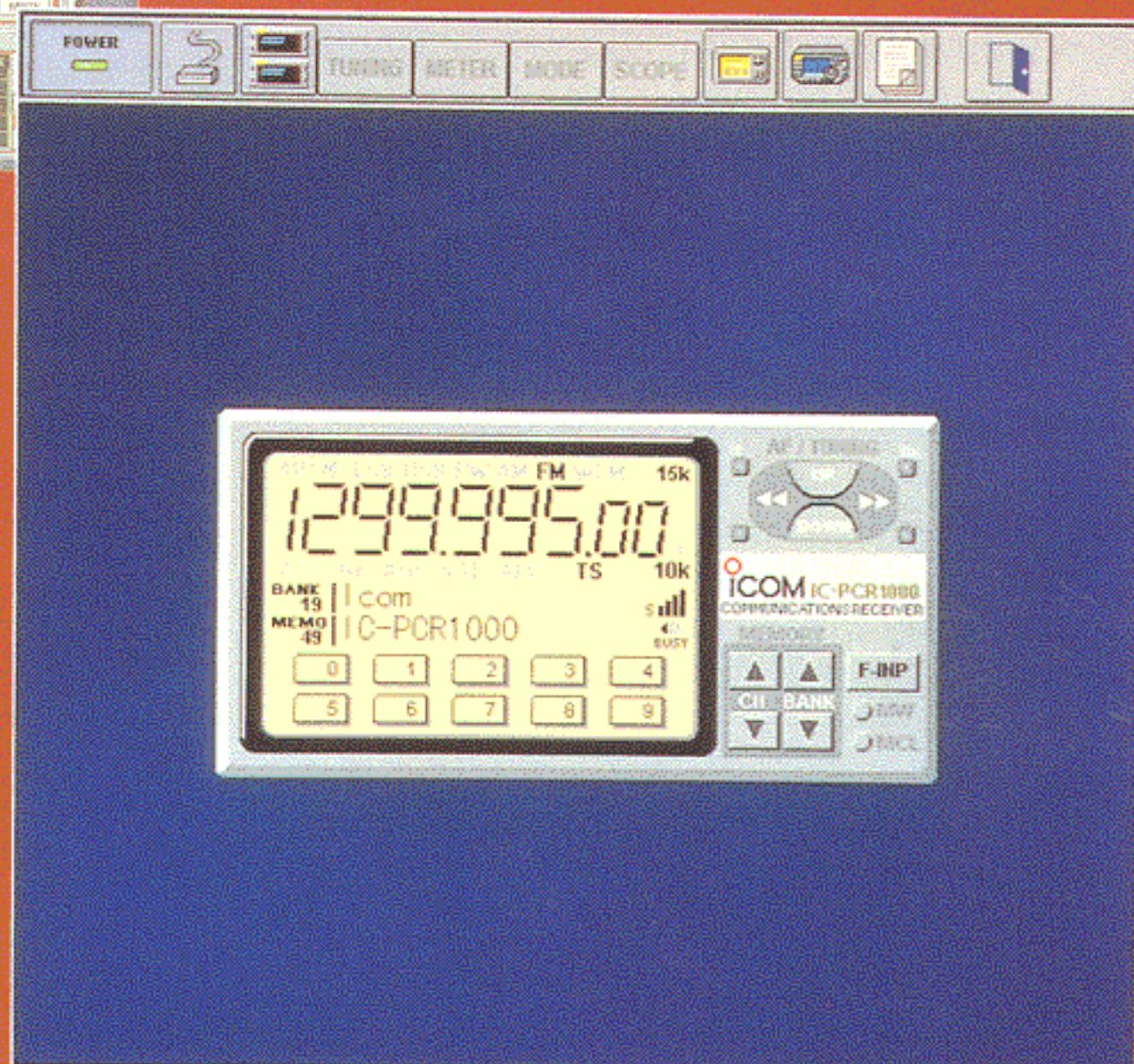
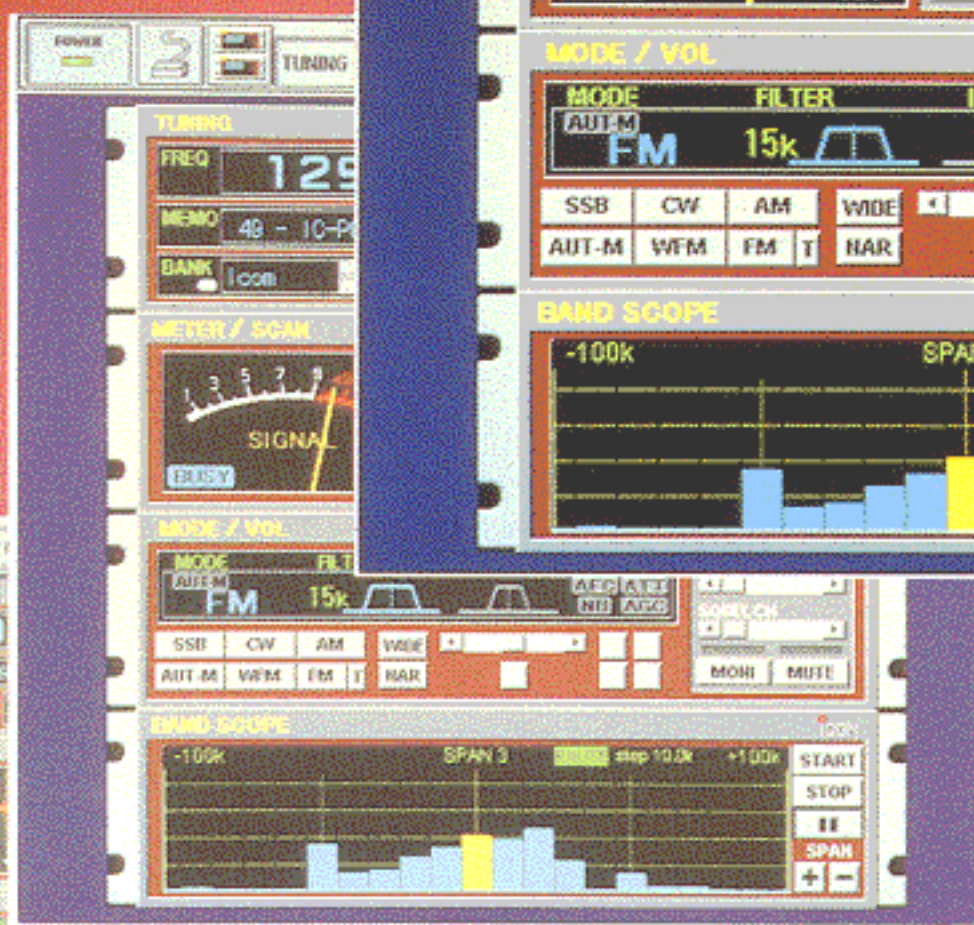
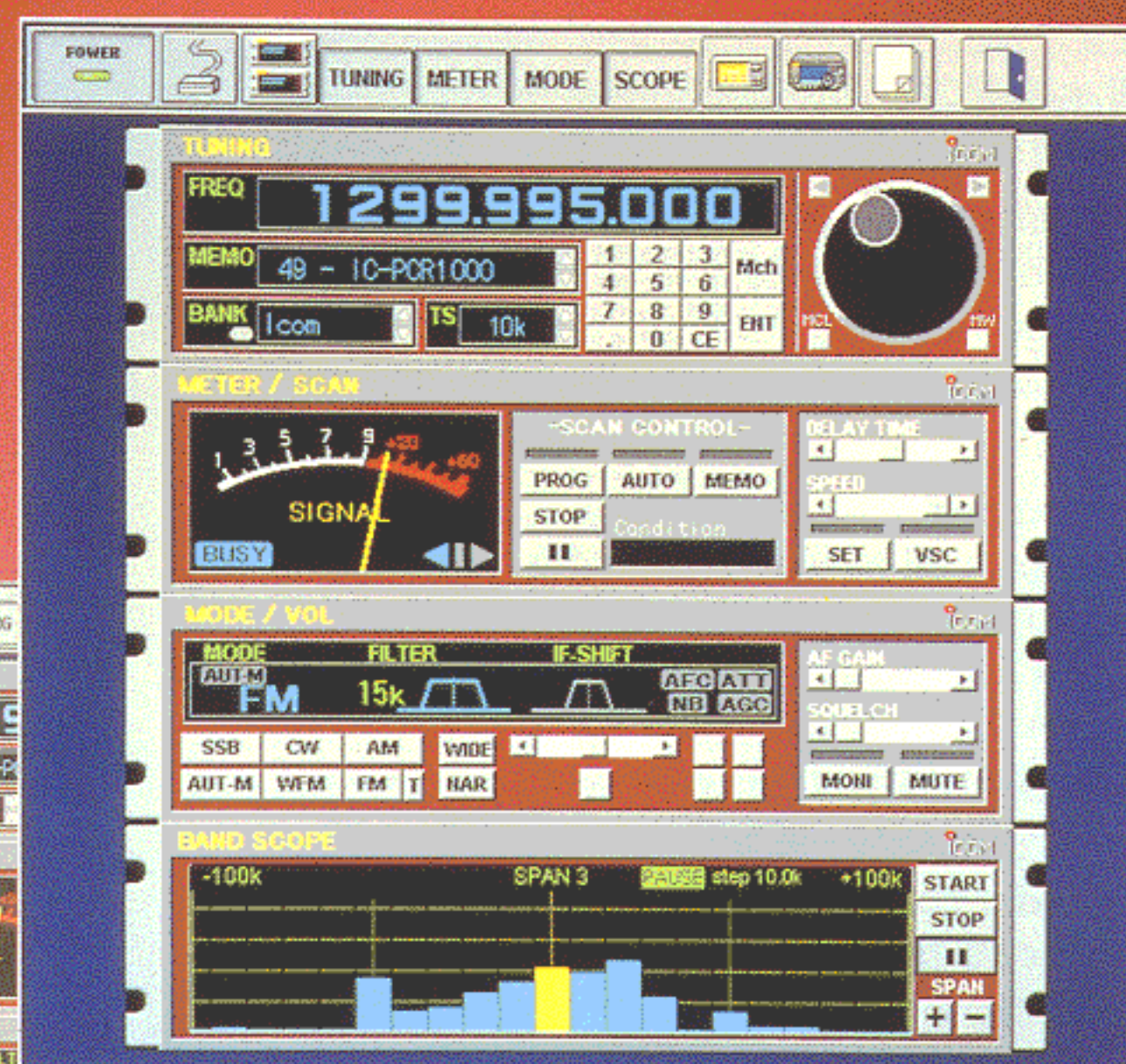
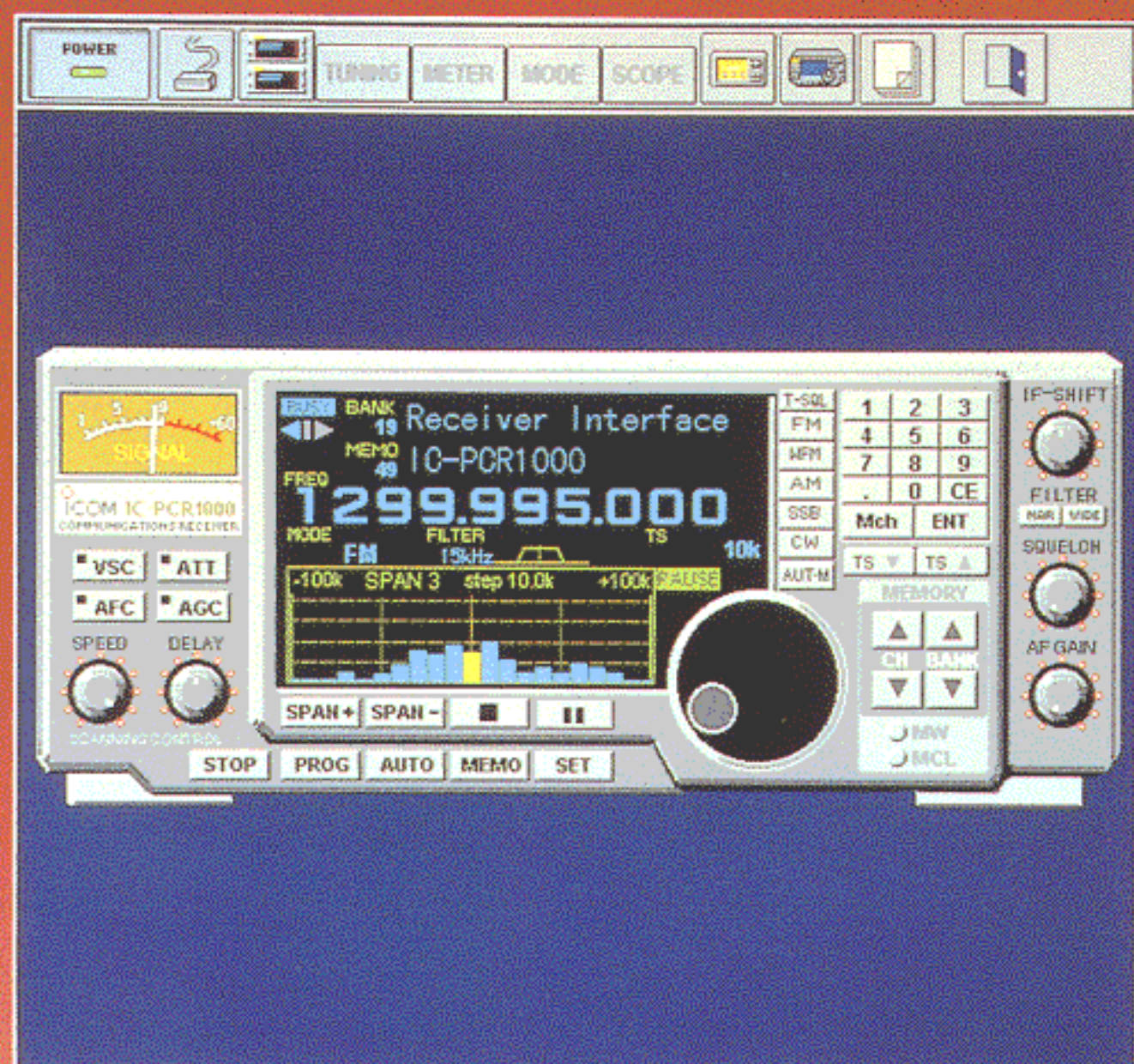




COMMUNICATIONS RECEIVER FOR COMPUTER

# IC-PCR1000



● Turn your PC into a wide band receiver

Icom Inc.



# BRING ANOTHER WORLD TO

The explosive growth of the Internet in the last few years has brought a wealth of information to PC users around the world. If, until now, the airwaves have been filled with communications of all kinds—broadcast radio and television, ham stations, etc.—The IC-PCR1000 lets you listen in to this exciting world from your computer. Don't miss out!

## ■ 3 interface screens to choose from

The IC-PCR1000 has 3 receiver interface screens as follows:

➤ **Communications receiver screen:**  
Shows S-meter (signal strength) level, a large frequency readout, keypad, etc.—what you would see on the front panel of a typical communications receiver.

➤ **Component-type screen:**  
Shows all available functions and is divided into 4 components: "TUNING," "MODE/VOL," "METER/SCAN" and "BANDSCOPE"—this screen is ideal for those who are already familiar with full function communications receivers.

➤ **Radio screen:**  
Shows preset buttons for stations and frequency readout, etc. like a typical stereo tuner—this provides the simplest operation for monitoring your most-listened-to-stations, such as AM/FM broadcasting and TV, etc.

## ■ External connection

The IC-PCR1000 connects to your PC externally—providing compatibility with many different computer models, even laptops, and offers exceptional receiver performance. Count on us!

## ■ Real-time bandscope function

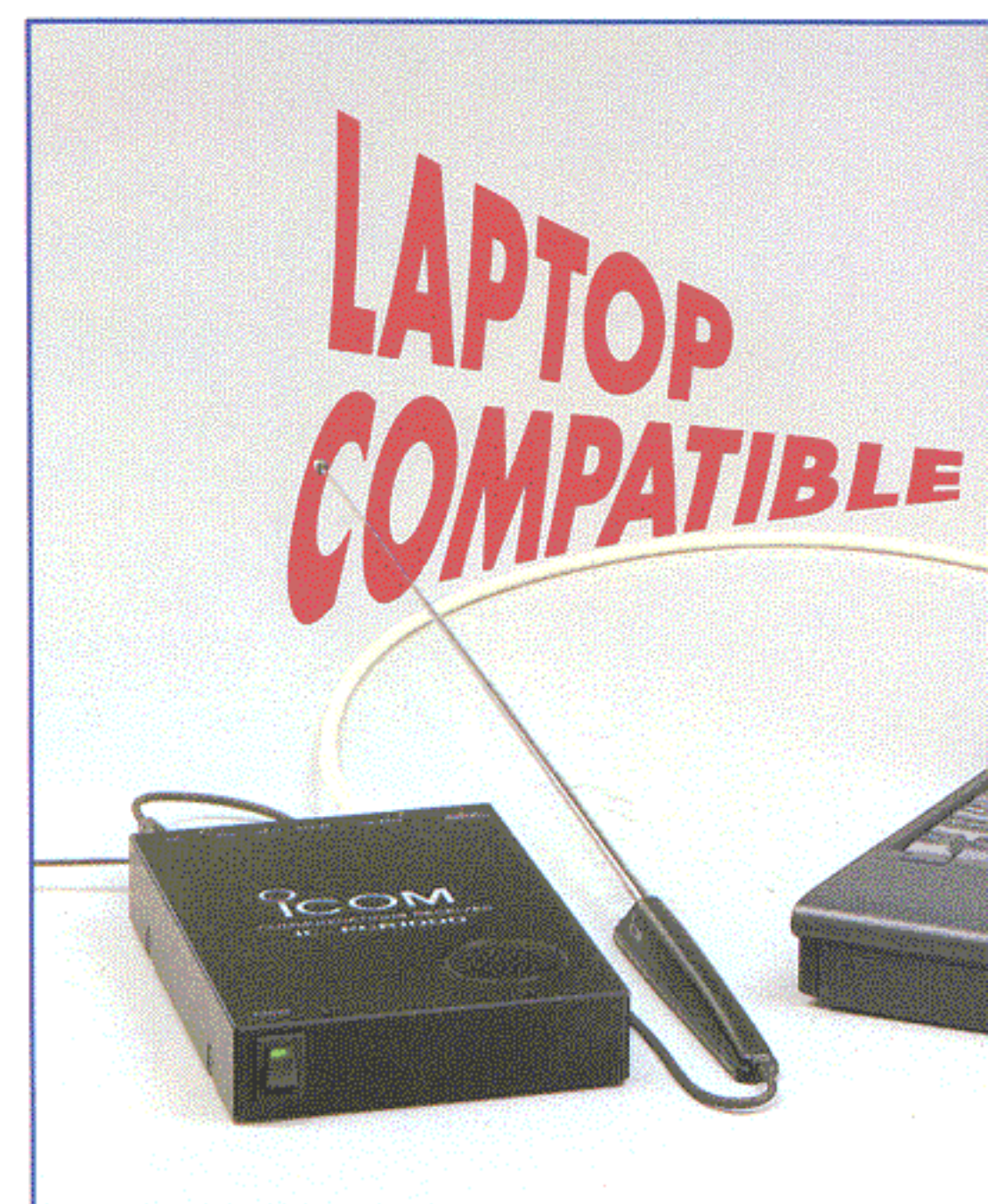
The real-time bandscope function makes it easy to find busy frequencies and to observe receive frequency band conditions. The passband width of the bandscope is selectable within the range  $\pm 200$  kHz. In addition, clicking the busy signal indicator automatically takes you to that frequency immediately. (WFM, FM and AM modes only)



## ■ Wide frequency coverage with all mode receive

The IC-PCR1000 covers a wide frequency range from 0.01–1300 MHz\* with all mode (WFM, FM, AM, SSB, CW) receive capability. You can receive not only AM/FM broadcasting and TV (audio only), but also ham, aviation and marine communications, etc. Band tracking RF filters are employed for bands above 50 MHz providing stable receive sensitivity characteristics and improved image response rejection. This also helps minimize distortion from excessively strong signals nearby, such as pager relays, etc.

\*Guaranteed 0.5–1300 MHz only; some frequency ranges are restricted depending on version.



COMMUNICATIONS RECEIVER  
**IC-PCR**









## Other features . . . . .

- CTCSS tone squelch decode function
- A total of six variety of scans are available for searching for signals
- A wide variety of factory pre-programmed tuning steps are available as well as a user-programmable step for special needs
- RF attenuator (20 dB) for protecting receive from distorting due to excessively strong nearby signals
- External speaker level control for using a computer's built-in speaker
- Icom's original DDS (Direct Digital Synthesizer) system provides super fine tuning resolution to 1 Hz
- 9600 baud data receive capability

## SPECIFICATIONS

## GENERAL

- Frequency range : (Unit: MHz)

Version	Frequency Range
U.S.A.	0.010000-823.999999* 849.000001-868.999999 894.000001-1300.000000
Europe and others	0.010000-1300.000000*

\*Specifications guaranteed 0.5-1300 MHz only.

- Mode : USB, LSB, CW, AM, FM, WFM
- Frequency stability :  $\pm 3$  ppm  
(at 1300 MHz:  $\pm 0^\circ\text{C}$  to  $+50^\circ\text{C}$ )
- Freq. resolution : 1 Hz (minimum)
- Power supply : 13.8 V DC  $\pm 15\%$  for receiver unit; or, supplied AC adapter (negative ground)
- Current drain (at 13.8 V DC):  
Power ON (PC power OFF) 0.1 A  
Max. audio 0.7 A  
Standby (squelched) 0.6 A
- Usable temp. range :  $\pm 0^\circ\text{C}$  to  $+50^\circ\text{C}$ ;  $+32^\circ\text{F}$  to  $+122^\circ\text{F}$
- Antenna connector : BNC (50  $\Omega$ )
- RS-232C connector : D-sub 9-pin (female)
- Dimensions : 127.5(W)  $\times$  30(H)  $\times$  199(D) mm  
(proj. not included) 5(W)  $\times$  1 $\frac{3}{16}$ (H)  $\times$  7 $\frac{27}{32}$ (D) in
- Weight : approx. 1 kg; 2.2 lb

## RECEIVER

- Receive system : Triple superheterodyne
- Intermediate freq. :  
1st 266.7 MHz  
2nd 10.7 MHz  
3rd 450 kHz (except WFM)
- Sensitivity (typical)\* :

Freq. (MHz)	FM	WFM	AM	SSB/CW
0.5-1.799999	—	—	2.5 $\mu\text{V}$	0.56 $\mu\text{V}$
1.8-27.999999	—	—	1.4 $\mu\text{V}$	0.28 $\mu\text{V}$
28-29.999999	0.5 $\mu\text{V}$	—	1.8 $\mu\text{V}$	0.35 $\mu\text{V}$
30-49.999999	—	—	1.8 $\mu\text{V}$	0.35 $\mu\text{V}$
50-699.999999	0.32 $\mu\text{V}$	0.79 $\mu\text{V}$	1.0 $\mu\text{V}$	0.2 $\mu\text{V}$
700-1300	0.4 $\mu\text{V}$	1.0 $\mu\text{V}$	1.3 $\mu\text{V}$	0.25 $\mu\text{V}$

\*FM and WFM are measured at 12 dB SINAD; AM, SSB and CW are measured at 10 dB S/N.; 230 kHz (for WFM), 15 kHz (for FM), 6 kHz (for AM) and 2.8 kHz (for SSB/CW) passband widths are selected.

- Squelch sensitivity (threshold):

Freq. (MHz)	FM	WFM	AM	SSB/CW
0.5-1.7999	—	—	1.8 $\mu\text{V}$	14 $\mu\text{V}$
1.8-27.99999	—	—	0.89 $\mu\text{V}$	7.1 $\mu\text{V}$
28-29.9999	0.63 $\mu\text{V}$	—	0.89 $\mu\text{V}$	7.1 $\mu\text{V}$
30-49.9999	—	—	0.89 $\mu\text{V}$	7.1 $\mu\text{V}$
50-699.9999	0.5 $\mu\text{V}$	5.6 $\mu\text{V}$	0.71 $\mu\text{V}$	5.6 $\mu\text{V}$
700-1300	0.63 $\mu\text{V}$	7.1 $\mu\text{V}$	0.89 $\mu\text{V}$	7.1 $\mu\text{V}$

- Selectivity :  
WFM 230 kHz/-6 dB  
WFM/FM/AM 50 kHz/-6 dB  
FM/AM 15 kHz/-6 dB  
FM/AM/SSB/CW 6 kHz/-6 dB  
AM/SSB/CW 2.8 kHz/-6 dB
- IF shift range : More than  $\pm 1.2$  kHz
- Max. audio output : 200 mW at 10% distortion with an 8  $\Omega$  load
- Ext. speaker connector : 3-conductor 3.5 (d) mm (1/8")/4-8  $\Omega$

## ADDITIONAL REQUIREMENTS

- System : Microsoft® Windows® Version 3.1 or Windows® 95
- CPU : Intel i486 DX4 or better (Pentium® 100 MHz or better recommended)
- Hard disk : At least 10 MB of free space
- Memory : At least 16 MB
- Serial port : Serial interface (38400 bps throughput)
- Display : 640 $\times$ 480 pixel resolution or greater (800 $\times$ 600 pixel recommended)

All stated specifications are subject to change without notice or obligation.

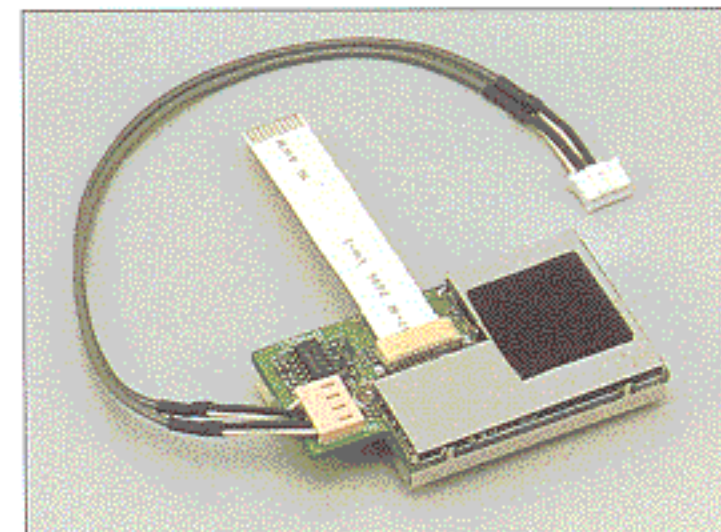
## UNPACKING

- IC-PCR1000 Receiver unit
- Floppy disk
- Telescoping antenna
- RS-232C serial cable
- AC adapter (depending on version)
- DC power cable (OPC-131; except U.S.A. version)



## OPTION

- UT-106 DSP UNIT  
Provides AF DSP capability, such as noise reduction and auto notch functions.



Microsoft® and Windows® are registered trademarks of Microsoft Corporation in the U.S.A. and other countries. Screen shots produced with permission from Microsoft Corporation. All other products or brands are registered trademarks or trademarks of their respective holders.

Icom Inc. 6-9-16, Kamihigashi, Hirano-ku, Osaka 547-0002, Japan Phone: 06 6793 5302 Fax: 06 6793 0013

Count on us!

## Icom America Inc.

<Corporate Headquarters>  
2380 116th Avenue N.E., Bellevue, WA 98004, U.S.A.  
Phone: (425) 454-8155 Fax: (425) 454-1509  
URL : <http://www.icomamerica.com>  
<Customer Service>  
Phone: (425) 454-7619

## Icom Canada

A Division of Icom America Inc.  
3071 #5 Road, Unit 9, Richmond, B.C., V6X 2T4, Canada  
Phone: (604) 273-7400 Fax: (604) 273-1900

## Icom (Australia) Pty. Ltd.

A.C.N. 006 092 575  
290-294 Albert Street, Brunswick, Victoria, 3056, Australia  
Phone: 03 9387 0666 Fax: 03 9387 0022  
URL : <http://www.icom.net.au>

## Asia Icom Inc.

6F No. 68, Sec. 1 Cheng-Teh Road, Taipei, Taiwan R.O.C.  
Phone: (02) 2559 1899 Fax: (02) 2559 1874

## Icom (Europe) GmbH

Communication Equipment  
Himmelgeister Str. 100, D-40225 Düsseldorf, Germany  
Phone: 0211 346047 Fax: 0211 333639  
URL : <http://www.icomeurope.com>

## Icom Spain S.L.

Ctra. de Gracia a Manresa Km. 14,750  
08190 Sant Cugat del Valles Barcelona, SPAIN  
Phone: (93) 589 46 82 Fax: (93) 589 04 46  
URL : <http://www.icomspain.com>

## Icom (UK) Ltd.

Unit 9, Sea St., Herne Bay, Kent, CT6 8LD, U.K.  
Phone: 01227 741741 Fax: 01227 741742  
URL : <http://www.icomuk.co.uk>

## Icom France S a

Zac de la Plaine, Rue Brindejonc des Moulinais  
BP 5804, 31505 Toulouse Cedex, France  
Phone: 561 36 03 03 Fax: 561 36 03 00  
URL : <http://www.icom-france.com>



Certificate Number Q14190

Icom Inc. (Japan), is an ISO9001 certification acquired company.

Your local distributor/dealer: